

W. Bass (2)

[pizz]

Handwritten musical notation for the first staff, featuring a treble clef, a key signature of one sharp (F#), and a 4/4 time signature. The notation includes a quarter note followed by four eighth notes, followed by three measures of rests. A dynamic marking 'p' is written below the first measure.

Handwritten musical notation for the second staff, consisting of four measures of rests.

[arc]

Handwritten musical notation for the third staff, featuring a treble clef, a key signature of one sharp (F#), and a 4/4 time signature. The notation includes a quarter note followed by four eighth notes, followed by three measures of rests. A dynamic marking 'cresc' is written below the first measure, and a dynamic marking 'f' is written below the third measure.

Handwritten musical notation for the fourth staff, consisting of four measures of rests.

[5]

Handwritten musical notation for the fifth staff, featuring a treble clef, a key signature of one sharp (F#), and a 4/4 time signature. The notation includes a quarter note followed by four eighth notes, followed by three measures of rests, and then a melodic line starting with a quarter note followed by eighth notes. A dynamic marking 'ff' is written below the first measure.

Handwritten musical notation for the sixth staff, featuring a treble clef, a key signature of one sharp (F#), and a 4/4 time signature. The notation includes a quarter note followed by four eighth notes, followed by three measures of rests, and then a melodic line starting with a quarter note followed by eighth notes. A dynamic marking 'ff' is written below the first measure.

Handwritten musical notation for the seventh staff, featuring a treble clef, a key signature of one sharp (F#), and a 4/4 time signature. The notation includes a quarter note followed by four eighth notes, followed by three measures of rests, and then a melodic line starting with a quarter note followed by eighth notes. A dynamic marking 'ff' is written below the first measure.

Handwritten musical notation for the eighth staff, featuring a treble clef, a key signature of one sharp (F#), and a 4/4 time signature. The notation includes a quarter note followed by four eighth notes, followed by three measures of rests, and then a melodic line starting with a quarter note followed by eighth notes. A dynamic marking 'ff' is written below the first measure.

Handwritten musical notation for the ninth staff, featuring a treble clef, a key signature of one sharp (F#), and a 4/4 time signature. The notation includes a quarter note followed by four eighth notes, followed by three measures of rests, and then a melodic line starting with a quarter note followed by eighth notes. A dynamic marking 'ff' is written below the first measure.

Handwritten musical notation for the tenth staff, featuring a treble clef, a key signature of one sharp (F#), and a 4/4 time signature. The notation includes a quarter note followed by four eighth notes, followed by three measures of rests, and then a melodic line starting with a quarter note followed by eighth notes. A dynamic marking 'ff' is written below the first measure.

[6]

Handwritten musical notation for the eleventh staff, featuring a treble clef, a key signature of one sharp (F#), and a 4/4 time signature. The notation includes a quarter note followed by four eighth notes, followed by three measures of rests, and then a melodic line starting with a quarter note followed by eighth notes. A dynamic marking 'sf' is written below the first measure.

Handwritten musical notation for the twelfth staff, featuring a treble clef, a key signature of one sharp (F#), and a 4/4 time signature. The notation includes a quarter note followed by four eighth notes, followed by three measures of rests, and then a melodic line starting with a quarter note followed by eighth notes. A dynamic marking 'sf' is written below the first measure.

Handwritten musical notation for the thirteenth staff, featuring a treble clef, a key signature of one sharp (F#), and a 4/4 time signature. The notation includes a quarter note followed by four eighth notes, followed by three measures of rests.

W. Bass (3)

7] *f*

f

mf

mp

P

8] [*pizz*]

P

(*arc*)

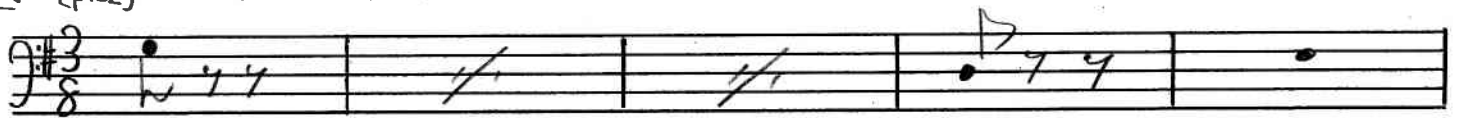
P

9] [*pizz*]

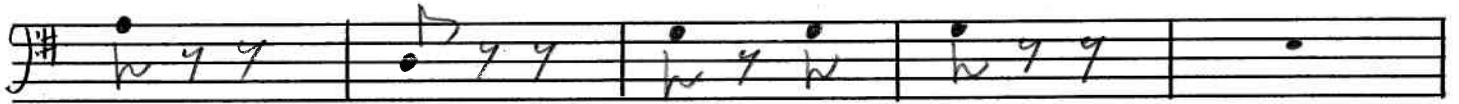
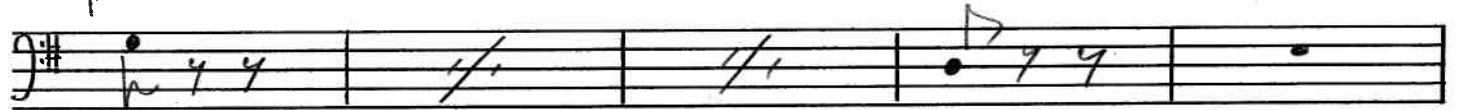
PP

W. Bass (4)

10 [pizz] Andante



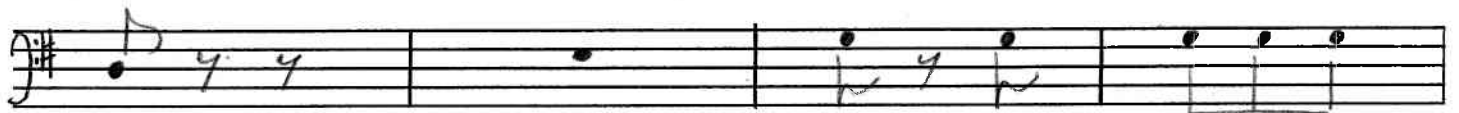
P



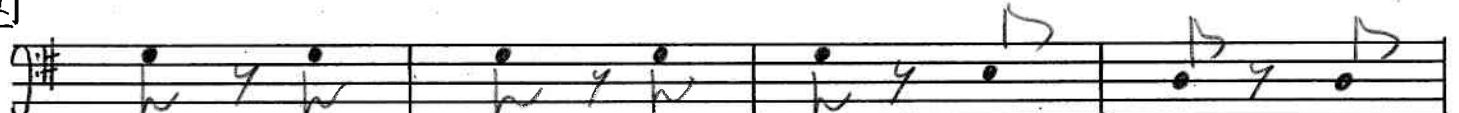
11



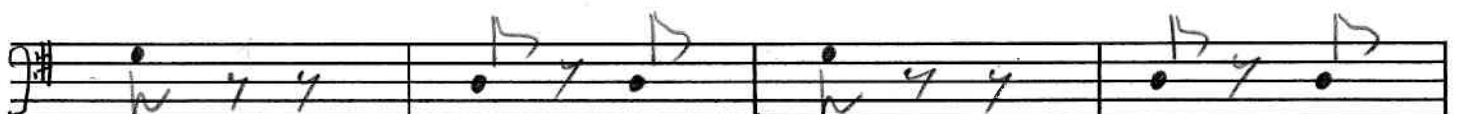
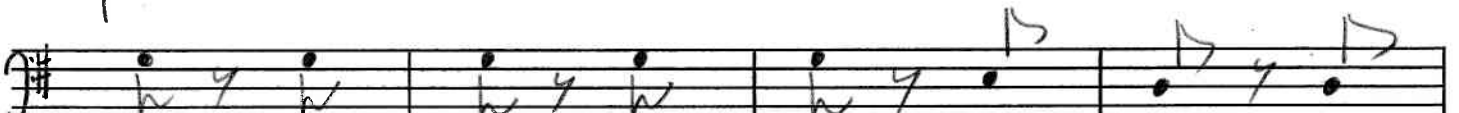
P



12



P



Allegro vivace



W. Bass (5)

(arc)

f

f pp

14

ff pp

ff pp

ff

ff

15

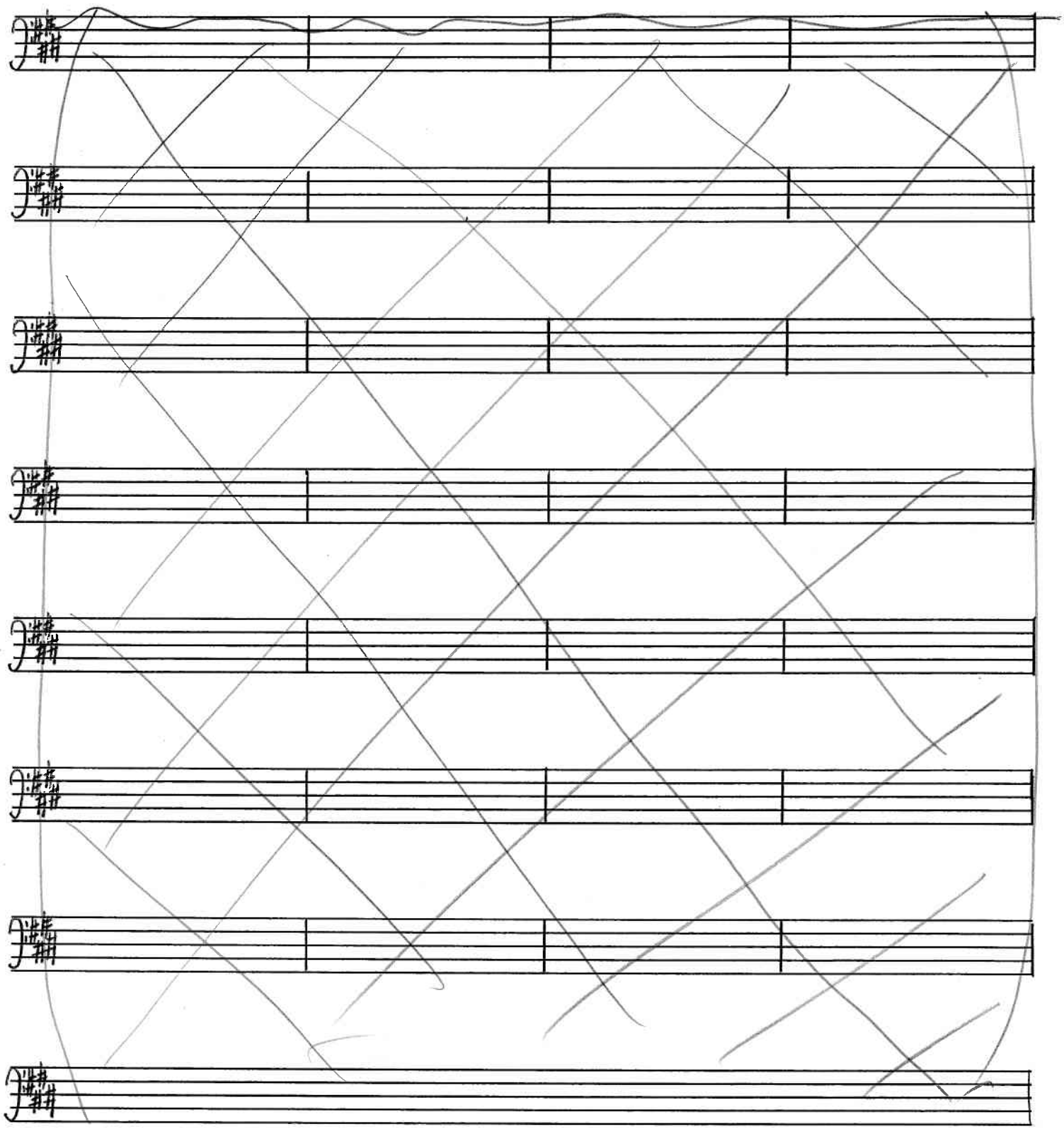
ff

ff

ff

ff

W, Bass (6)



W. Bass (7)

17

Handwritten musical score for measures 17-18. The score is written on four staves in G major (one sharp). Measure 17 begins with a piano (*pp*) dynamic. The first two staves show a rhythmic pattern of eighth notes. The third staff has a forte (*ff*) dynamic. The fourth staff has a piano (*pp*) dynamic. Measure 18 begins with a forte (*ff*) dynamic. The first two staves show a rhythmic pattern of eighth notes. The third staff has a forte (*ff*) dynamic. The fourth staff has a piano (*pp*) dynamic.

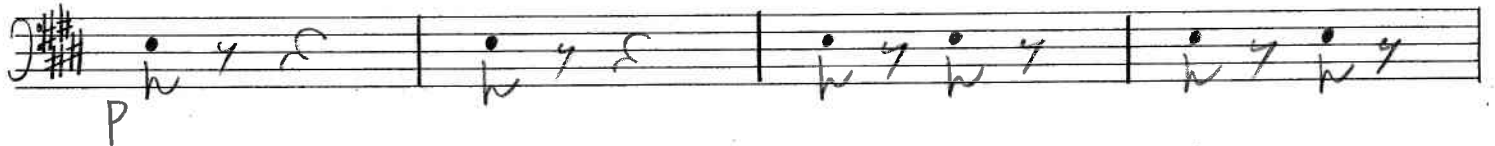
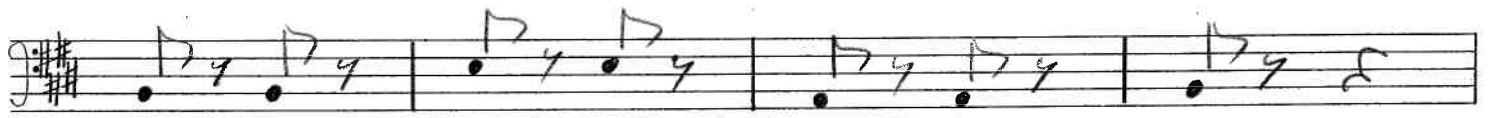
18

Handwritten musical score for measures 18-19. The score is written on four staves in G major (one sharp). Measure 18 begins with a forte (*ff*) dynamic and the instruction *tutta forza*. The first two staves show a rhythmic pattern of eighth notes. The third staff has a forte (*ff*) dynamic. The fourth staff has a piano (*pp*) dynamic. Measure 19 begins with a forte (*ff*) dynamic. The first two staves show a rhythmic pattern of eighth notes. The third staff has a forte (*ff*) dynamic. The fourth staff has a piano (*pp*) dynamic.

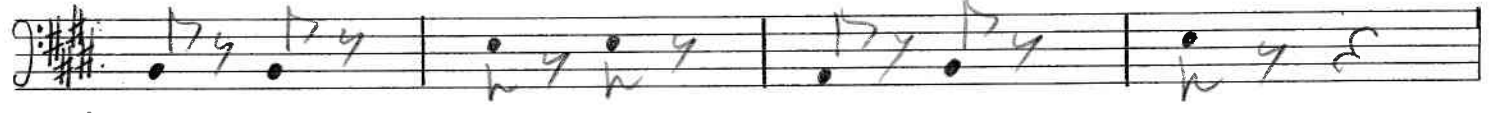
19 [pizz]

Handwritten musical score for measures 19-20. The score is written on four staves in G major (one sharp). Measure 19 begins with a piano (*p*) dynamic and the instruction *[pizz]*. The first two staves show a rhythmic pattern of eighth notes. The third staff has a piano (*p*) dynamic. The fourth staff has a piano (*p*) dynamic. Measure 20 begins with a piano (*p*) dynamic. The first two staves show a rhythmic pattern of eighth notes. The third staff has a piano (*p*) dynamic. The fourth staff has a piano (*p*) dynamic.

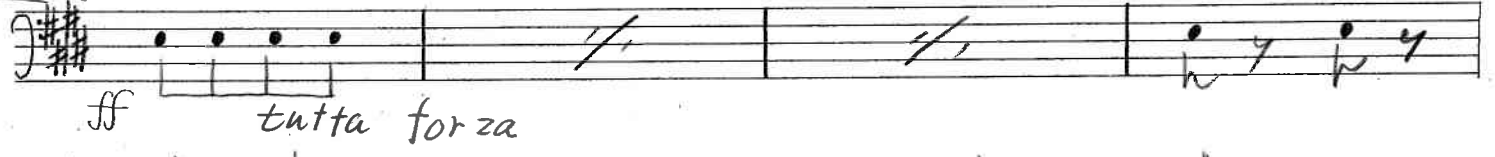
W. Bass (8)



p



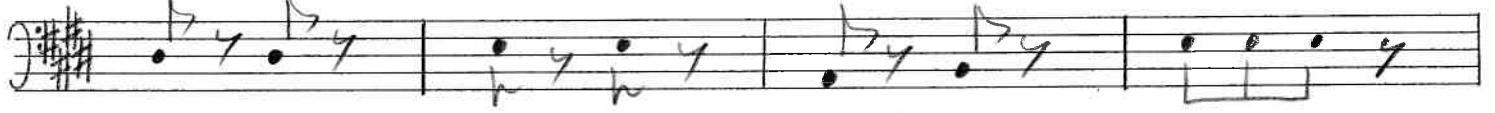
20 (arc)



ff *tutta forza*



ff



21



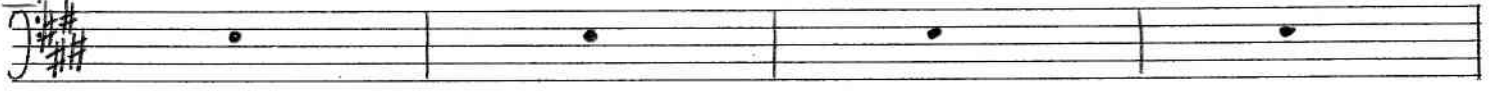
ff



ff



22



W. Bass (9)

23

24

25

W. Bass (10)

261