

Cello(1) Andante

ウィリアム テル序曲

作曲 G. ロッシーニ
編曲 平井朗

Cello (2)

1

Cllo(3)

2

Handwritten musical score for the first system, measures 1-3. It features five staves with various musical notations including notes, rests, and dynamic markings like 'p' and 'pp'.

Handwritten musical score for the second system, measures 4-8. It includes trills marked 'tr' and 'tr#' above the first staff, and continues with complex notation across five staves.

3

Allegro

Handwritten musical score for the third system, measures 9-12. It features six staves with rhythmic patterns and dynamic markings like 'pp'.

Cello (4)

4

Handwritten musical score for Cello (4), measures 4-7. The score is written on four staves. The first two staves are treble clef, and the last two are bass clef. The key signature is one sharp (F#). Measure 4 contains a whole note chord (F#2, A2) in the treble and a whole note chord (F#1, A1) in the bass. Measure 5 contains a whole note chord (F#2, A2) in the treble and a whole note chord (F#1, A1) in the bass. Measure 6 contains a whole note chord (F#2, A2) in the treble and a whole note chord (F#1, A1) in the bass. Measure 7 contains a whole note chord (F#2, A2) in the treble and a whole note chord (F#1, A1) in the bass. Dynamics include *p* and *sf*. The word "chesc" is written above the bass staff in measure 6.

5

Handwritten musical score for Cello (4), measures 8-13. The score is written on five staves. The first two staves are treble clef, and the last three are bass clef. The key signature is one sharp (F#). Measures 8-13 contain a series of eighth notes in the treble and bass staves. Dynamics include *ff*. A double bar line with a slash is present in the middle of each staff in measures 9-13.

6

Handwritten musical score for Cello (4), measures 14-16. The score is written on three staves. The first two staves are treble clef, and the last is bass clef. The key signature is one sharp (F#). Measure 14 contains a whole note chord (F#2, A2) in the treble and a whole note chord (F#1, A1) in the bass. Measure 15 contains a whole note chord (F#2, A2) in the treble and a whole note chord (F#1, A1) in the bass. Measure 16 contains a whole note chord (F#2, A2) in the treble and a whole note chord (F#1, A1) in the bass. Dynamics include *sf*. The word "chesc" is written above the bass staff in measure 14.

Cell (5)

Handwritten musical notation for the first staff of the first system. It features a treble clef, a key signature of one sharp (F#), and a series of notes with stems and beams, some marked with 'x' above them.

7 *ff*

Handwritten musical notation for the second staff of the first system, starting with a boxed '7' and a fortissimo 'ff' dynamic marking. It contains a dense sequence of notes with stems and beams, followed by a few whole notes.

f

Handwritten musical notation for the third staff of the first system, starting with a forte 'f' dynamic marking. It contains a dense sequence of notes with stems and beams, followed by a few whole notes.

mf

Handwritten musical notation for the fourth staff of the first system, starting with a mezzo-forte 'mf' dynamic marking. It contains a dense sequence of notes with stems and beams, followed by a few whole notes.

mp

Handwritten musical notation for the fifth staff of the first system, starting with a mezzo-piano 'mp' dynamic marking. It contains a dense sequence of notes with stems and beams, followed by a few whole notes.

8 *p*

Handwritten musical notation for the first staff of the second system, starting with a boxed '8' and a piano 'p' dynamic marking. It features a treble clef, a key signature of one sharp, and notes with stems and beams.

p

Handwritten musical notation for the second staff of the second system, starting with a piano 'p' dynamic marking. It includes a wavy line labeled 'tr' above the staff, indicating a trill.

p

Handwritten musical notation for the third staff of the second system, starting with a piano 'p' dynamic marking. It features a treble clef, a key signature of one sharp, and notes with stems and beams.

p

Handwritten musical notation for the fourth staff of the second system, starting with a piano 'p' dynamic marking. It features a treble clef, a key signature of one sharp, and notes with stems and beams.

9 *p*

Handwritten musical notation for the first staff of the third system, starting with a boxed '9' and a piano 'p' dynamic marking. It features a treble clef, a key signature of one sharp, and notes with stems and beams.

pp

Handwritten musical notation for the second staff of the third system, starting with a pianissimo 'pp' dynamic marking. It includes a wavy line above the staff and notes with stems and beams.

pp

Handwritten musical notation for the third staff of the third system, starting with a pianissimo 'pp' dynamic marking. It includes a wavy line above the staff and notes with stems and beams.

Handwritten musical notation for the fourth staff of the third system, ending with a double bar line and repeat signs.

Cello (6)

Andante

10

Handwritten musical notation for exercise 10, measures 1-5. The score is in 3/8 time and G major. It consists of five staves. The first two staves begin with a piano (p) dynamic and a fermata over a dotted quarter note. The third and fourth staves feature a sequence of eighth notes with fermatas. The fifth staff concludes with a dotted quarter note. Slanted double lines indicate measure rests in the second and third measures of the first two staves.

11

Handwritten musical notation for exercise 11, measures 1-5. The score is in 3/8 time and G major. It consists of five staves. The first two staves begin with a piano (p) dynamic. The first staff contains a dotted quarter note followed by a half note. The second staff contains a dotted quarter note followed by a half note. The third and fourth staves feature eighth notes with fermatas. The fifth staff concludes with a dotted quarter note.

12

Handwritten musical notation for exercise 12, measures 1-5. The score is in 3/8 time and G major. It consists of five staves. The first two staves begin with a piano (p) dynamic. The first staff contains a dotted quarter note followed by a half note. The second staff contains a dotted quarter note followed by a half note. The third and fourth staves feature eighth notes with fermatas. The fifth staff concludes with a dotted quarter note. At the end of the fifth staff, the tempo changes to *Allegro vivace*. Below the staff, there are handwritten annotations: a treble clef, a key signature of two sharps (F# and C#), a time signature of 2/4, and a measure rest symbol.

12

Cello (7)

ff

sf *pp*

14

ff *pp*

ff

15

ff

Cello (8)

A single musical staff in bass clef with a key signature of two sharps (F# and C#). It contains four measures of music. The first three measures each contain two eighth notes, and the fourth measure contains a quarter note followed by a half note. The dynamic marking 'ff' is written below the first measure.

A single musical staff in bass clef with a key signature of two sharps (F# and C#). It contains four measures of music, following the same rhythmic pattern as the first staff.

16

A single musical staff in bass clef with a key signature of two sharps (F# and C#). It contains four measures. The first three measures each contain a single dotted quarter note. The fourth measure is completely scribbled out with diagonal lines.

A large section of the page consisting of seven musical staves, each in bass clef with a key signature of two sharps (F# and C#). The entire section is completely crossed out with a large, hand-drawn 'X' that spans across all staves.

Allo (9)

A musical staff in G major (one sharp) with a common time signature. It begins with a half note G4 and a quarter note A4. This is followed by a large section of the staff that has been completely scribbled out with black ink.

mf

pp

17

A musical staff in G major with a common time signature, containing a series of chords. The first four measures consist of a series of dotted quarter notes (G, A, B, C) over a bass line of quarter notes (G, A, B, C). The final measure contains a half note G4 and a quarter note A4.

ff

pp

A musical staff in G major with a common time signature, containing a series of chords. The first four measures consist of a series of dotted quarter notes (G, A, B, C) over a bass line of quarter notes (G, A, B, C). The final measure contains a half note G4 and a quarter note A4.

A musical staff in G major with a common time signature, containing a series of chords. The first four measures consist of a series of dotted quarter notes (G, A, B, C) over a bass line of quarter notes (G, A, B, C). The final measure contains a half note G4 and a quarter note A4.

A musical staff in G major with a common time signature, containing a series of chords. The first four measures consist of a series of dotted quarter notes (G, A, B, C) over a bass line of quarter notes (G, A, B, C). The final measure contains a half note G4 and a quarter note A4.

18

ff

A musical staff in G major with a common time signature. It contains a series of chords in the first measure, followed by two measures with a double slash (/) indicating a section to be omitted. The final measure contains a half note G4 and a quarter note A4.

ff

tutta forza

A musical staff in G major with a common time signature, containing a series of chords. The first four measures consist of a series of dotted quarter notes (G, A, B, C) over a bass line of quarter notes (G, A, B, C). The final measure contains a half note G4 and a quarter note A4.

A musical staff in G major with a common time signature. It contains a series of chords in the first measure, followed by two measures with a double slash (/) indicating a section to be omitted. The final measure contains a half note G4 and a quarter note A4.

ff

A musical staff in G major with a common time signature, containing a series of chords. The first four measures consist of a series of dotted quarter notes (G, A, B, C) over a bass line of quarter notes (G, A, B, C). The final measure contains a half note G4 and a quarter note A4.

19

A musical staff in G major with a common time signature. It begins with a half note G4, followed by a slur over a half note A4 and a quarter note B4.

p

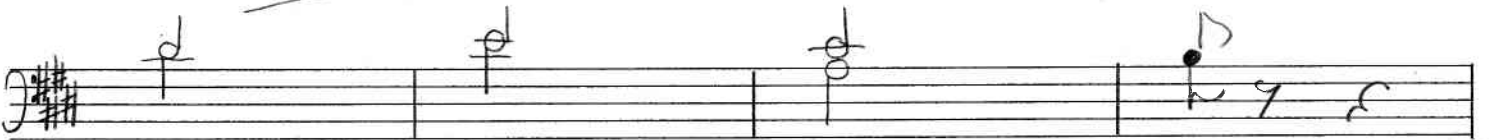
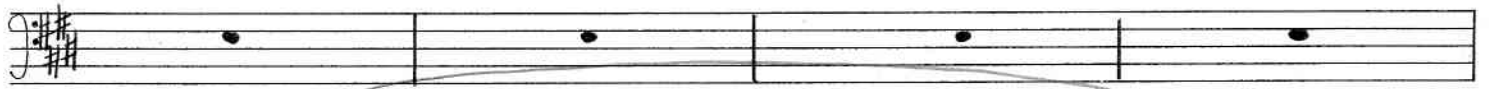
A musical staff in G major with a common time signature. It begins with a half note G4, followed by a slur over a half note A4 and a quarter note B4.

p

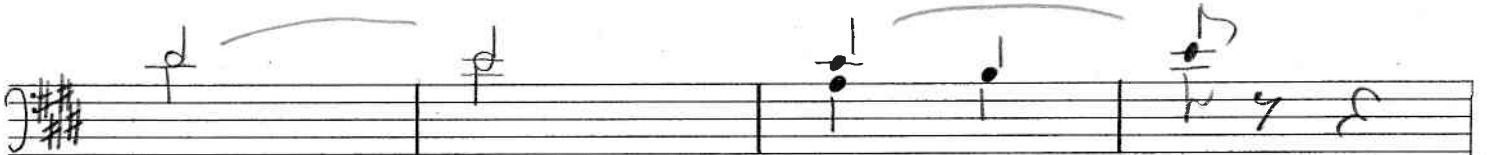
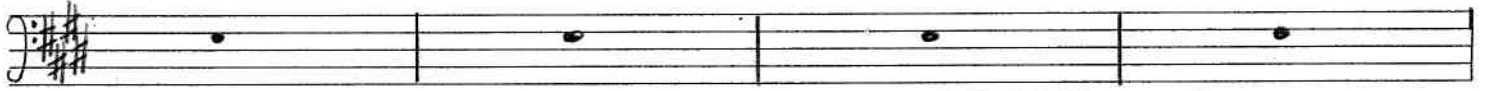
A musical staff in G major with a common time signature. It begins with a half note G4, followed by a slur over a half note A4 and a quarter note B4.

p

Cello (10)



p



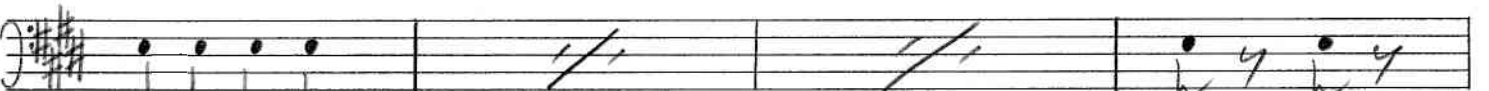
p

20



ff

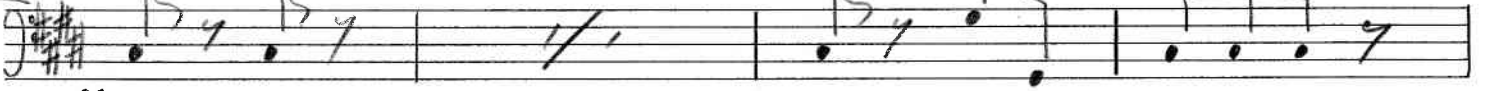
tutta forza



ff



21



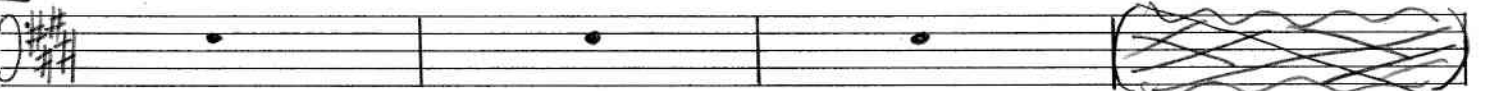
ff



ff



22



Celli (II)

23 *mf* *pp*

ff

f

24 *ff* *string*

sf *sf*

sf

f *ff*

25 *f*

ff

Celli (12)

sf *sf*

sf *sf*

f *f*

26

sf

ff

ff *ff* FINE