

Andante

□-ネ(2)

Handwritten musical notation on a five-line staff. It begins with a treble clef, a key signature of one sharp (F#), and a 4/4 time signature. The first measure contains a quarter note followed by four eighth notes. The subsequent three measures are marked with a double slash (//), indicating they are to be played as rests.

*p*

Handwritten musical notation on a five-line staff, consisting of four measures, each marked with a double slash (//).

Handwritten musical notation on a five-line staff. It begins with a treble clef, a key signature of one sharp (F#), and a 4/4 time signature. The first measure contains a quarter note followed by four eighth notes. The subsequent three measures are marked with a double slash (//).

*cresc*

*f*

Handwritten musical notation on a five-line staff, consisting of four measures, each marked with a double slash (//). The final two measures are heavily scribbled out with diagonal lines.

[5]

Handwritten musical notation on a five-line staff. It begins with a treble clef, a key signature of one sharp (F#), and a 4/4 time signature. The first measure contains a quarter note followed by four eighth notes. The subsequent three measures contain more complex rhythmic patterns, including sixteenth notes and beams. The first measure is marked with a double slash (//).

*ff*

Handwritten musical notation on a five-line staff, continuing the piece from the previous staff. It begins with a treble clef, a key signature of one sharp (F#), and a 4/4 time signature. The first measure contains a quarter note followed by four eighth notes. The subsequent three measures contain more complex rhythmic patterns. The first measure is marked with a double slash (//).

*ff*

Handwritten musical notation on a five-line staff, continuing the piece. It begins with a treble clef, a key signature of one sharp (F#), and a 4/4 time signature. The first measure contains a quarter note followed by four eighth notes. The subsequent three measures contain more complex rhythmic patterns. The first measure is marked with a double slash (//).

*ff*

Handwritten musical notation on a five-line staff, continuing the piece. It begins with a treble clef, a key signature of one sharp (F#), and a 4/4 time signature. The first measure contains a quarter note followed by four eighth notes. The subsequent three measures contain more complex rhythmic patterns. The first measure is marked with a double slash (//).

*ff*

Handwritten musical notation on a five-line staff, continuing the piece. It begins with a treble clef, a key signature of one sharp (F#), and a 4/4 time signature. The first measure contains a quarter note followed by four eighth notes. The subsequent three measures contain more complex rhythmic patterns. The first measure is marked with a double slash (//).

*ff*

Handwritten musical notation on a five-line staff, continuing the piece. It begins with a treble clef, a key signature of one sharp (F#), and a 4/4 time signature. The first measure contains a quarter note followed by four eighth notes. The subsequent three measures contain more complex rhythmic patterns. The first measure is marked with a double slash (//).

*ff*

[6]

Handwritten musical notation on a five-line staff. It begins with a treble clef, a key signature of one sharp (F#), and a 4/4 time signature. The first measure contains a quarter note followed by four eighth notes. The subsequent three measures contain more complex rhythmic patterns. The first measure is marked with a double slash (//).

*sf*

*sf*

Handwritten musical notation on a five-line staff. It begins with a treble clef, a key signature of one sharp (F#), and a 4/4 time signature. The first measure contains a quarter note followed by four eighth notes. The subsequent three measures contain more complex rhythmic patterns. The first measure is marked with a double slash (//).

*sf*

*sf*

Handwritten musical notation on a five-line staff. It begins with a treble clef, a key signature of one sharp (F#), and a 4/4 time signature. The first measure contains a quarter note followed by four eighth notes. The subsequent three measures are marked with a double slash (//).

□-ネ(3)

17) *f*

18)

19)

□-ネ (4)

10 - *Andante*

Handwritten musical score for exercise 10, *Andante*. It consists of five staves of music in G major and 3/8 time. The first two staves are marked with 'p' and 'n' (natural) and feature slurs over the first two notes of each measure. The third and fourth staves continue the melodic line with various rhythmic patterns. The fifth staff concludes with a whole note.

11

Handwritten musical score for exercise 11. It consists of three staves of music in G major and 3/8 time. The first staff is marked with 'p' and features a slur over the first two notes. The second and third staves continue the melodic line with eighth and sixteenth notes.

12

Handwritten musical score for exercise 12. It consists of five staves of music in G major and 3/8 time. The first two staves are marked with 'p'. The fifth staff is marked with 'Allegro vivace' and shows a key signature change to A major and a time signature change to 2/4.

□ - ネ (5)

*f*

*f* *pp*

14

*ff*

*ff* *pp*

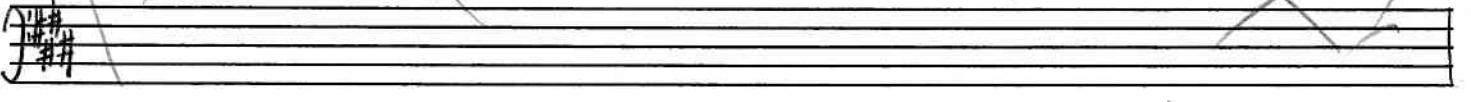
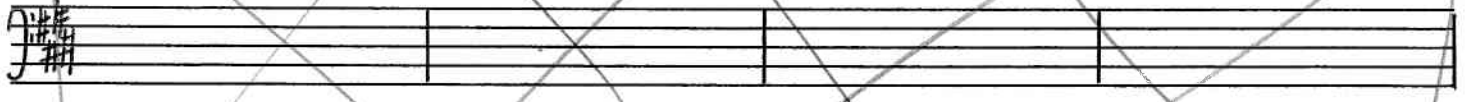
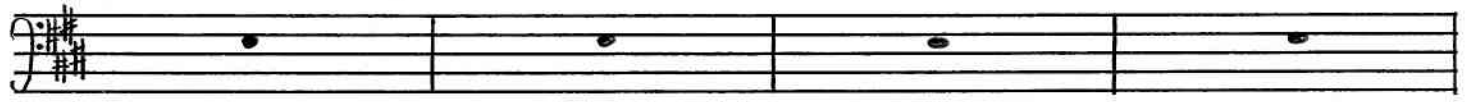
*ff*

15

*ff*

*ff*

□-ネ (6)



□-ネ (7)

17

Handwritten musical score for measures 17-18. The score is written on four staves in a grand staff format. The key signature has two sharps (F# and C#). Measure 17 starts with a piano (*pp*) dynamic. The music consists of eighth and sixteenth notes. Measure 18 features a fortissimo (*ff*) dynamic. The notation includes various rhythmic patterns and rests.

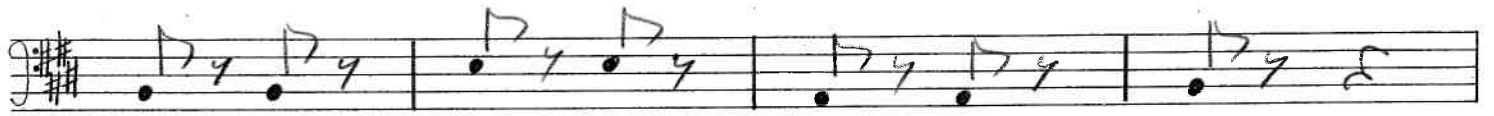
18

Handwritten musical score for measures 18-19. The score is written on four staves. Measure 18 begins with a fortissimo (*ff*) dynamic and the instruction *tutta forza*. The music features a series of rests followed by eighth notes. Measure 19 continues with similar notation. The key signature remains two sharps.

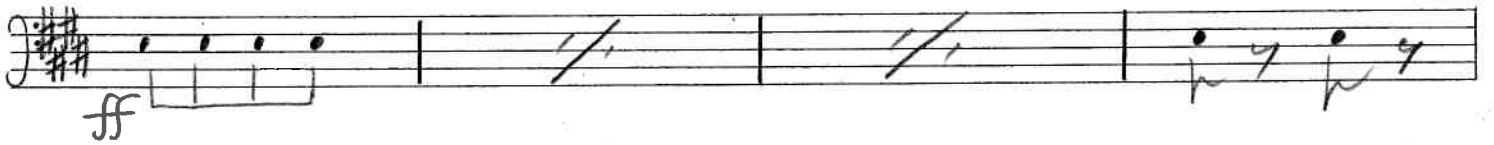
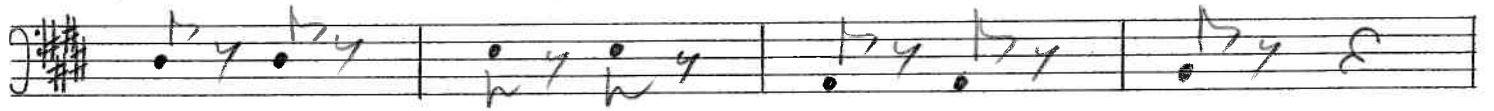
19

Handwritten musical score for measures 19-20. The score is written on four staves. Measure 19 starts with a piano (*p*) dynamic. The music consists of eighth notes and rests. Measure 20 continues with similar notation. The key signature remains two sharps.

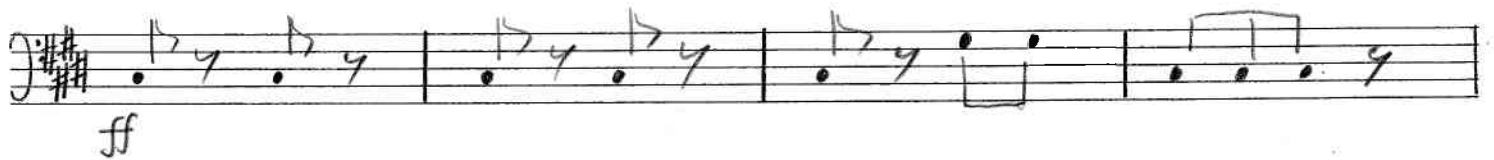
□-ネ (8)



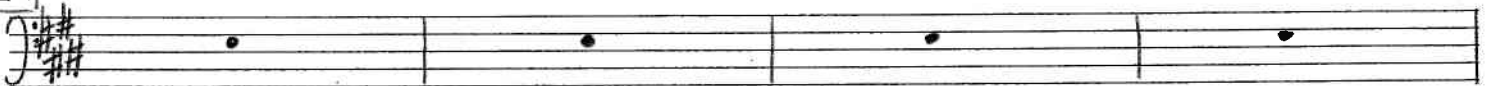
20



21



22





Handwritten musical score for measures 23-24. The score is written on six staves. The first two staves are for the right hand, and the last four are for the left hand. The key signature has two sharps (F# and C#). Measure 23 starts with a piano (pp) dynamic. Measure 24 starts with a forte (f) dynamic. The left hand has some rests indicated by double slashes.

Handwritten musical score for measures 24-25. The score is written on six staves. The first two staves are for the right hand, and the last four are for the left hand. The key signature has two sharps (F# and C#). Measure 24 starts with a fortissimo (ff) dynamic. A 'string' marking is present above the first two staves. Measure 25 starts with a fortissimo (ff) dynamic. The left hand has some rests indicated by double slashes.

Handwritten musical score for measures 25-26. The score is written on four staves. The first two staves are for the right hand, and the last two are for the left hand. The key signature has two sharps (F# and C#). Both the right and left hands start with a fortissimo (ff) dynamic. The left hand has some rests indicated by double slashes.

口-ネ (10)

Handwritten musical score for the first system, consisting of five staves. The first staff has a treble clef and a key signature of two sharps (F# and C#). The second and third staves have bass clefs. The fourth and fifth staves have treble clefs. The music includes various rhythmic values, slurs, and dynamic markings such as *sf* and *ff*. The fifth staff ends with a double bar line and a slash through it, indicating a section cut.

G.P.

261

Handwritten musical score for the second system, consisting of six staves. The first staff has a treble clef and a key signature of two sharps. The second and third staves have bass clefs. The fourth and fifth staves have treble clefs. The sixth staff has a bass clef. The music includes slurs, dynamic markings (*sf*, *ff*), and accents (>). The sixth staff ends with a double bar line.